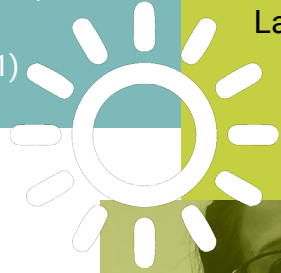


FAMILY ENGAGEMENT IN EDUCATION IS CRITICAL TO ACADEMIC SUCCESS

By age 3, 85% of a child's core brain structure is formed, but less than 4% of public educational funds are dedicated to this period.
(Schiavelli & Benchoff, 2001)

From age 3 onward, children should be learning about 2,500 words per year.
(Biemiller & Slonim, 2001)



What Hospitals Say

"Plant the Seed of Learning has allowed schools and medical professionals to partner with each other to better support our families and their understanding of brain development and the crucial influence of play on child development."



WHAT THE PARENTS SAY

"I have been able to use ideas from the sessions immediately."

"It is so nice to be educated as a parent on the topics that will help my baby learn."

"I like having the time to walk with other parents."

Quality early learning requires the commitment of families, schools, and community members in order for children to reach their potential as they are set on the path to success in school and life.

WORKING IN PARTNERSHIP WITH...

Lancaster County School Districts
Wellspan Ephrata Hospital
Lancaster General Hospital
Early Childhood Innovative Connections
Lancaster County Early Learning Centers
Popovsky Studios
Local area Libraries
United Way of Lancaster County

What Educators Say

Working with other educators and professionals in the county has benefited our students tremendously"

"Through collective impact, we have been able to share resources to assist our families with the transition to kindergarten."

Proud partner with

**United Way
of Lancaster County**



BONDING THROUGH LEARNING

Free Family Learning Sessions
Designed for children ages 2-4

Please see our website for session locations and registration information.

Our goal is to influence our future learners in Lancaster County through meaningful activities that empower and educate both parents and children.



planttheseedoflearning.org

Our Impact



MAJOR SUCCESSES:

250 TAKE-HOME BAGS DISTRIBUTED TO FAMILIES EACH YEAR, FULL OF EDUCATIONAL TOYS AND BOOKS FOR PARENTS TO TAKE HOME.

77% OF CHILDREN WHO PARTICIPATED IN PTSL SINCE BIRTH SCORED PROFICIENT ON THE KINDERGARTEN READINESS ASSESSMENT WHILE THE COUNTY AVERAGE FOR PROFICIENCY IS 26%.

94% OF PARENTS WHO PARTICIPATED IN PTSL REPORT INCREASING READING AND PURPOSEFUL PLAY WITH THEIR CHILD TO AT LEAST FIVE TIMES PER DAY.

LAUNCHED A MONTHLY NEWSLETTER IN LATE 2018 FOCUSED ON PROVIDING EVIDENCE-BASED INFORMATION ON CHILD DEVELOPMENT AND PARENTING.

Register for sessions by visiting planttheseedoflearning.org and select 'Grow the Seed of Learning.'

SESSION DESCRIPTIONS

Continue your child's learning with Grow the Seed of Learning. Session topics will be expanded to explain key educational milestones.

THE BRAIN AND LITERACY

We know that a child is born with an IQ range that can vary as much as 20 points. While genes and physical health set the stage for some of a child's future behavior, we now know that a child's IQ also depends on environmental experiences they are exposed to on a daily basis. Reading to your child can influence brain development and cultivate literacy early in life.

ORAL LANGUAGE

Oral language is the foundation of learning to read and write. Children who do not develop strong oral language skills during the preschool years may find it difficult to keep pace with their peers in later years. Conversation is crucial for vocabulary development— learning 2-4 new words daily.

PLANT THE SEED OF SCIENCE

Real science begins with childhood curiosity, which leads to discovery and exploration. Young children, like scientists, need to practice predicting, observing, classifying, hypothesizing, experimenting, and communicating. Give them opportunities to reflect on their findings, how they reached them, and how the findings compare to their previous ideas and the ideas of others.



MATH EVERYWHERE

Even without your support, toddlers use math concepts to make sense of their world. Before they start school, most children develop an understanding of addition and subtraction through everyday interactions.

NURSERY RHYMES AND PUPPETS

Research has shown that nursery rhymes can be instrumental in boosting young children's ability to master pre-reading skills. The patterns of nursery rhymes help children to learn vowels and consonants, speech, and memorization. 'Jack and Jill' and 'Humpty Dumpty' allow children to memorize basic structures and patterns in the English language.

A SCRIBBLE OR A MASTERPIECE

Young toddlers may tell you a line is a dragon. Older toddlers may proudly tell you "This says, 'I love you'" as they point to squiggles on the page. Whatever your child draws, or no matter how legible it is, make sure to respond to the meaning and encourage their writing development.

Social Emotional Learning

Participants will understand how social – emotional development unfolds in the first four years of life and how to support it in young children. Areas of the brain involved in social interactions and emotional reactions will be identified. Care givers will learn how emotions help the brain identify, filter, and prioritize.